



TRILUX Medical Aurinio[®] L 30

LED examination light for intensive care unit, normal care,
physician practice



TRILUX
ENGINEERING HEALTH.

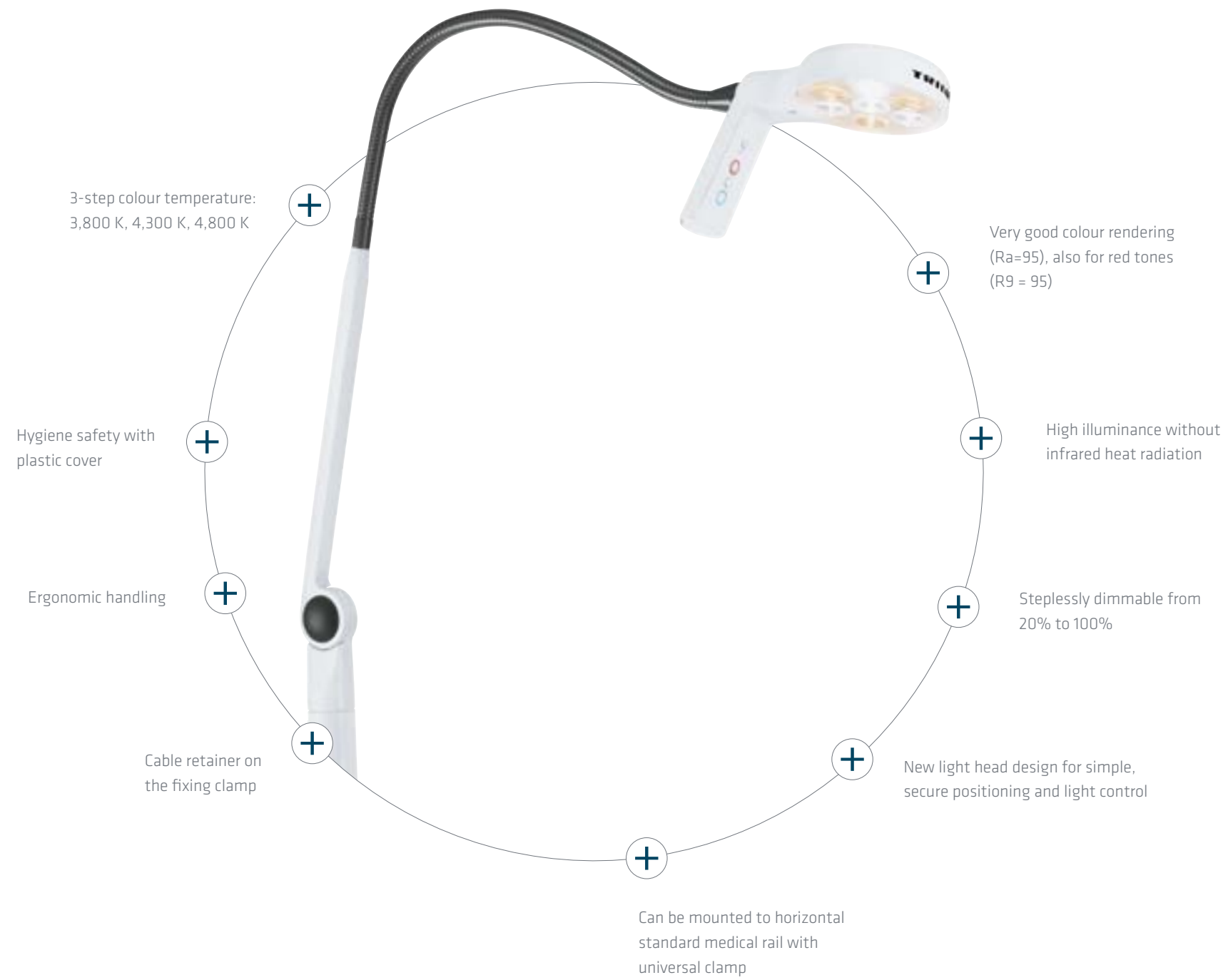
TRILUX Medical Aurinio® L 30

Light: **maximum**
Costs: **minimum**
Handling: **ideal**

The TRILUX Medical Aurinio® L30 convinces in three different ways: with a sensational 50,000 hours of light, fantastic values for purchasing and consumption and with simple, intuitive handling with a simultaneously large action radius and stable positioning of the light body via a flexible arm.

The Aurinio® L30 is available for gear tray mounting and as a mobile luminaire.

LED



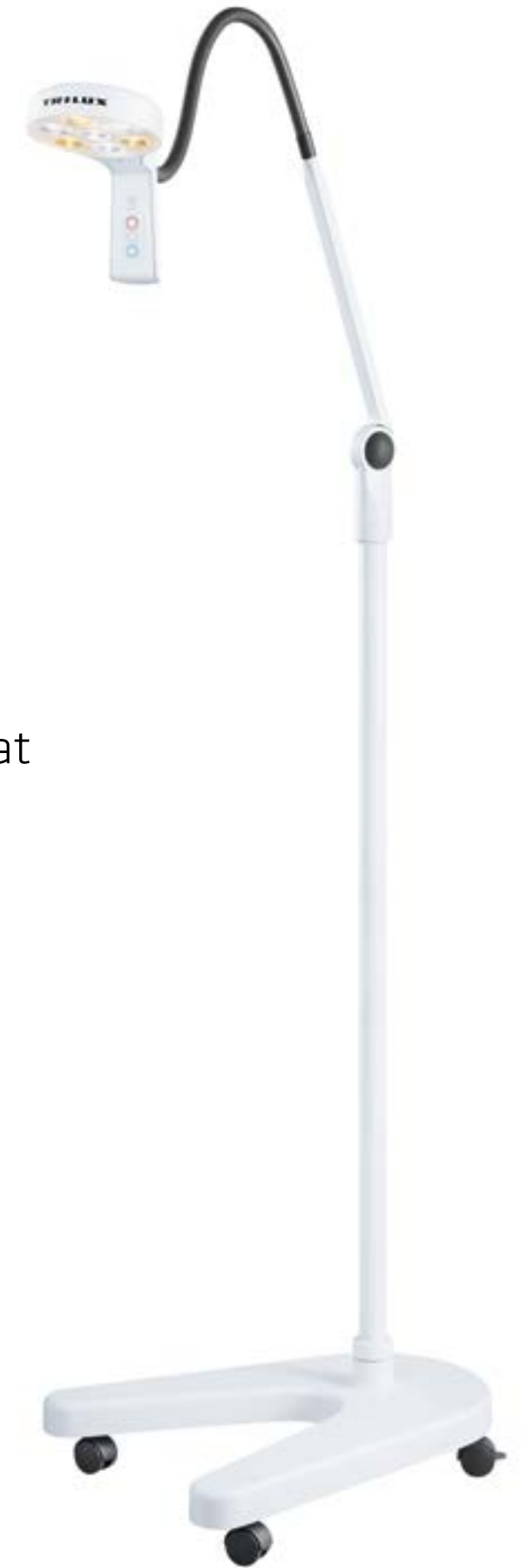
PRECISE POSITIONING,
HIGH ROTATABILITY

The mobile luminaire that truly **works everywhere.**

Whether for intensive care, in examination rooms, patient rooms or doctors' practices – the Aurinio® L 30 fits everywhere because it needs hardly any space.

This means maximum mobility for examinations and a high level of everyday work suitability, because the slender appearance conceals a robust construction.

Ergonomic handling // Adjustable colour temperature // Perfect colour rendering



Technical data

Illuminance at a distance of 0.5 m	30,000 lx
Light field diameter at a distance of 0.5 m	0.16 m
Colour temperature	3,800 K, 4,300 K, 4,800 K
Colour rendition index Ra	95
Lifetime of lamp	> 50,000 hours
Dimmable	20 % - 100 %
Weight Aurinio® L 30 incl. clamp	2.9 kg
Overall length of luminaire incl. clamp	1.4 m
Diameter of luminaire head	13 cm
Cable length	1.5 m
Nominal capacity of luminaire	15.5 VA
Input voltage range	100 - 240 V / AC 50 - 60 Hz

Technical data, trolley

Height	1.59 m (start of flex-arm)
Base dimensions (L x W)	62 x 46 cm
Trolley weight	17 kg
Cable length	2.5m
No. of rollers	4 (2 are blockable)

Directives and standards: DIN EN 60601-1:1990+A1:1993+A2:1995, DIN EN 60601-1/A13:1996-10, DIN EN 60601-1-2:2001, DIN EN 60601-2-41:2001. Conforms to Directive 93/42EEC **CE**

All technical data and the weight and dimensional specifications are carefully compiled, but no liability is accepted for errors. We reserve the right to make changes that reflect improvements.

Product in some cases are shown with accessories that must be ordered separately. Illustrations may show products with optional equipment.

TRILUX Medical GmbH & Co. KG

Huettenstrasse 21

D-59759 Arnsberg

Tel.: +49 (0) 29 32 . 301 - 100

Fax: +49 (0) 29 32 . 301 - 121

info@trilux-medical.com

www.trilux-medical.com